

# PUBLIC NOTICE

## CITY OF ALAMEDA HEALTH CARE DISTRICT BOARD OF DIRECTORS

### SPECIAL MEETING AGENDA

Wednesday, May 30, 2018

**CLOSED SESSION: 5:30 P.M. | OPEN SESSION: 6:30 P.M.**

**Location:**

Closed Session and Open Session  
2 East Board Room  
Alameda Hospital  
2070 Clinton Avenue, Alameda, CA 94501

**Office of the Clerk: (510) 814-4001**

*Members of the public who wish to comment on agenda items will be given an opportunity before or during the consideration of each agenda item. Those wishing to comment must complete a speaker card indicating the agenda item that they wish to address and present to the District Clerk. This will ensure your opportunity to speak. Please make your comments clear and concise, limiting your remarks to no more than three (3) minutes.*

- I. **Call to Order** Michael Williams
- II. **Roll Call** Kristen Thorson
- III. **General Public Comments**
- IV. **Adjourn into Executive Closed Session**
- V. **Closed Session Agenda**
  - A. Call to Order
  - B. Discussion on Appointment of Executive Director Gov't Code Sec 54957(b)(10)
  - C. Report Involving Health Care District Trade Secrets Health and Safety Code  
Section 32106
  - D. Adjourn into Open Session
- VI. **Reconvene to Public Session (Expected to start at 6:30 p.m. – 2 East Board Room)**
  - A. Announcements from Closed Session Michael Williams
- VII. **Regular Agenda**
  - A. District & Operational Updates
    - 1) District Liaison Reports  
INFORMATIONAL
      - a. Alameda Health System Liaison Report Tracy Jensen  
ENCLOSURE (PAGE 3-4)

**VIII. General Public Comments**

**IX. Board Comment**

**X. Adjournment**

<p>Next Scheduled Meeting Dates (2<sup>nd</sup> Monday, every other month or as scheduled)</p> <p><b>June 11, 2018</b> <b>August 13, 2018</b></p>	<p>Open Session 5:30 PM Dal Cielo Conference Room Alameda Hospital</p>
---	--

CITY OF ALAMEDA HEALTH CARE DISTRICT

---

**MEETING DATE:** May 30, 2018

**TO:** City of Alameda Health Care District, Board of Directors

**FROM:** Tracy Jensen

**SUBJECT:** AHS Liaison Report

---

Please find attached two (2) documents as my AHS Liaison Report to the City of Alameda Health Care District Board of Directors which I will be discussing at the special meeting on May 30, 2018.

Acute Care SBU - Alameda Hospital

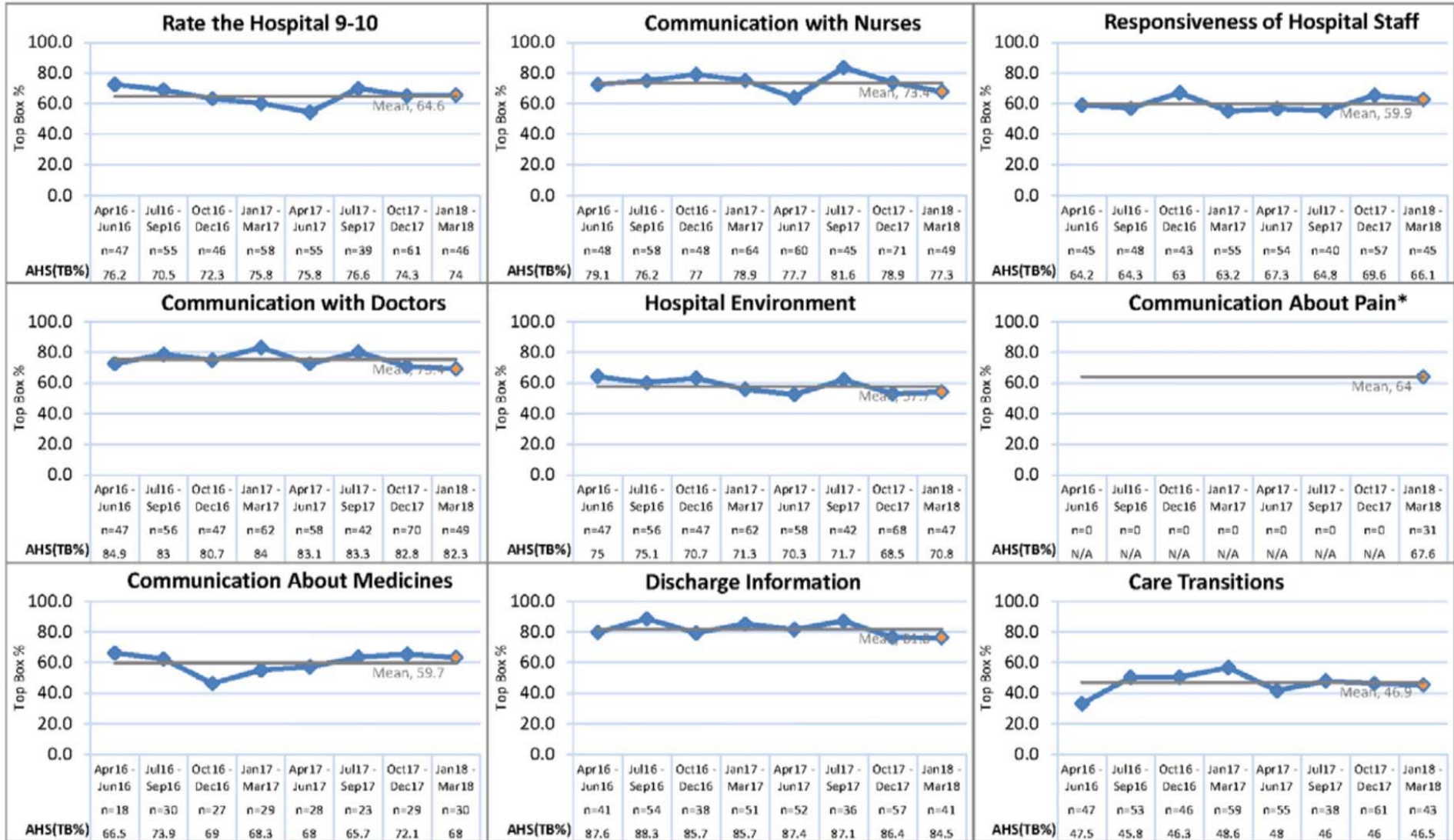
Pillars	Definition	True North	FY 2017 (baseline)	FY 18 Target	Current Performance		FY18 YTD Results	Trend	Desired Direction	
					Timeframe	Results				
Access	Be a leader in access to quality affordable care	Observed to Expected Average Length of Stay	4.85	Ratio of Observed to Expected equal to 1	Mar-18	Observed	5.17	4.71		↓
			4.07			Expected	4.35	4.21		
			1.19			Ratio	1.19	1.12		
Sustainability	Be an organization that operates profitably and generates funding to support our mission	Contribution Margin	4.0%	2.9%	Feb-18	-19.2%	-2.7%		↑	
		Expenses per Adjusted Patient Days (APD)	\$912	\$2,390	Feb-18	\$1,074	\$974		↓	
		Full Time Equivalents (FTEs) per Adjusted Occupied Bed (AOB)	1.88	4.76	Feb-18	1.98	1.98		↓	
		Worked Hours per Adjusted Patient Days (APD)	9.32	22.80	Feb-18	9.57	9.63		↓	
Quality	Promote and maintain patient health and wellness while doing no harm	Acute: All Cause 30 Day Readmits	12.59	11.54	Feb-18	16.56	13.01		↓	
		Inpt Acute Med-Surg Falls Per 1000 Patient Days	2.94	2.1	Mar-18	1.94	1.94		↓	
		C. Difficile SIR (NHSN)	0.830	0.950	Q3 FY18	//	0.393		↓	
Experience	Be the best place to stay well, heal and receive care	HCAHPS - % Rate Hospital 9 or 10	61.6	64.2	Feb-18	52.5	66.4		↑	
		HCAHPS - % Care Transitions	50.1	48.0	Feb-18	39.2	46.1		↑	
						Project Delayed or Performance Greater Than 2% From Desired Target				
						Project At Risk or Performance Within 2% of Target				
						Project On Track/Completed or Performance Target Met or Exceeded				

// = No SIR for this time period because the number of predicted infections is equal to zero

Note: All Sustainability(finance) metrics represent performance for the campus as a whole, not just acute care service per Financial Report. All targets are system targets, campus targets are not available.

WATCH METRICS	Pillars	True North	FY 2017 (baseline)	FY 18 Target	Current Performance		FY18 YTD Results	Trend	Desired Direction
					Timeframe	Results			
	Access	CMI (MS- DRG)	1.38	Monitor Only	Mar-18	1.38	1.33		
		Harm Reduction - AHRQ PSI 90 (V6)	0.21		Mar-18	0.00	0.00		↓
	Quality	CAUTI SIR (NHSN)	0.000		Q3 FY18	//	//		↓
		Safety Alerts Significance E and Above	42		Mar-18	3	38		↓
	Experience	Complaints	61		Mar-18	6	70		↓
		Grievances	49		Mar-18	3	16		↓

Survey Type: Inpatient H-CAHPS  
Discharge Date: Jan 2018 - Mar 2018



\*CMS officially moved from the "Pain Management" domain to the "Communication About Pain" domain starting with January 1, 2018 discharges